



SAINT RAPHAEL THE ARCHANGEL

CATHOLIC CHURCH

MARCH 2, 2025 EIGHTH SUNDAY IN ORDINARY TIME



8TH SUNDAY IN ORDINARY TIME

"A good tree does not bear rotten fruit, nor does a rotten tree bear good fruit. A good person out of the store of goodness in his heart produces good, but an evil person out of a store of evil produces evil; for from the fullness of the heart the mouth speaks." - Lk 6:43, 45

WELCOME!


VISIT OR CONTACT US


6047 Bishops Place
Saint Louis, MO 63109

314.352.8100
straphaelarchangel.org

Mon.-Thu. | 7:30am-4:00pm
Fri. | 7:30am-12:00pm

 @SRAtoday

 @SRAtoday

 straphaelarchangel

SCHOOL INFORMATION

6000 Jamieson Avenue
Saint Louis, MO 63109

314.352.9474 | 314.351.7477 (Fax)

Mon.-Fri. | 7:00am-3:00pm

MASS SCHEDULE

WEEKEND MASS

Saturday | 7:00am, 4:30pm
Sunday | 9:00am

WEEKDAY MASS

Mon. - Fri. | 8:00am

CONFESSION

Monday - Friday | 7:30am
Saturday | 3:30pm
Other | By Appointment

CHURCH OPEN FOR PRIVATE PRAYER

Mon.-Fri. | 8:00am-2:00pm
Saturday | 8:00am-4:30pm

PARISH CLERGY

Fr. Thomas Molini, Pastor
thomasmolini@archstl.org

Fr. Robert Lawson, Associate Pastor
robertlawson@archstl.org

LAY LEADERSHIP

Brian Klos, Pastoral Council
bcklos@gmail.com

Liz Murphey, School Board
schoolboard@straphaelarchangel.org

Joseph Cyr, Finance Council
314.335.7322

Jacqueline Ilg, HSA President
hsa@straphaelarchangel.org

PARISH STAFF

Ray and Mary Anne Braun, Music Ministers
Braun@straphaelarchangel.org

Diane Halbert, Parish Office Manager
halbert@straphaelarchangel.org

Mickey Janos, Admn. Assistant
janos@straphaelarchangel.org

Pam Hager, Parish Support Staff/
Child Safety Coordinator
hager@straphaelarchangel.org

Robert Schlueter, Maintenance

Julie Hayes, School Principal
hayes@straphaelarchangel.org

Kathy Shaver, School Secretary
secretary@straphaelarchangel.org

Qi Franz, Cafeteria Manager
franz@straphaelarchangel.org

Sarah Henderson, Youth Minister
hendersons@stgabrielstl.org

MARCH 2, 2025 EIGHTH SUNDAY IN ORDINARY TIME

Ash Wednesday – March 5

The celebration of Ash Wednesday is a gift and a challenge. The gift is a common effort on the part of the entire Catholic community to re-focus our attention on the Gospel call to discipleship. Together we support each other as we all are called to more fervent prayer, generous charity, and acts of penance. The gift of this season is that we share this journey of faith, lifting each other in love to God.

The challenge is to ACT! Lent is a call to action, to make a particular effort for our spiritual wellbeing and that of the whole Church. How will you plan to engage this season of discipleship?

Ash Wednesday is on March 5, so make plans now to attend Mass and plan your Lenten intentions.

Masses on Ash Wednesday will be at 8:00am and 5:30pm at St. Raphael.

Masses at St. Gabriel will be at 6:00am, 8:00am, 12 noon, and 6:00pm.

The *Magnificat Lenten Companion* booklet is available for your reflection. It offers a daily meditation for each day of Lent as well as a Penance Service to prepare to make a good Confession this Lent.

Also, please pick up a "Rice Bowl" for Lenten donations. Catholic Relief Services relies on the generosity of Catholics to serve those in need both locally and throughout the world. A portion of all we collect with the Rice Bowl stays to support local charities. Please return it at the end of Lent with funds collected, and thank you.

Elsewhere in the bulletin is a description of our two parish Lenten projects. Your help is appreciated.

Also, during Lent, Fr. Lawson will offer a series of talks on the Creed, Tuesdays of Lent at 6:30pm at St. Gabriel Church. This year, 2025, is the 1700th Anniversary of the Council of Nicea, held in 325 A.D., where the basic "creed" was proposed and the beginnings of the Creed we recite at Sunday Masses. This summary of our beliefs helped formalize the basic teachings of the Church and laid the foundation for our evangelization efforts throughout the world.

Parish Leadership Day of Prayer

All leaders of parish organizations are requested to participate in the April 5 Day of Prayer. Beginning with 7:00am Mass, we will spend time reflecting on the Mission of St. Raphael as a parish community and considering how each program and organization supports that ministry. Parishioners who have an interest are also welcome to participate. Please contact Mickey in the Parish Office to register. The day will conclude by 12:00 noon.

A Prayer Before Holy Mass

Heavenly Father: I, your unworthy servant, come to worship You in this Holy Sacrifice of the Mass. By Your grace, kindly help me to listen attentively, pray devoutly, and receive worthily the Sacred Body and Blood of Your Son, our Lord Jesus Christ. May Your Holy Spirit open the eyes of my heart to perceive more fully the great Mystery that takes place on the sacred altar. At this Holy Mass, I wish to pray in particular for the following intentions: *(here name them)*. Amen.

Medical Supplies and Equipment

St. Gabriel Parish has a collection of medical equipment available for use, stored at the rectory. This includes wheelchairs, walkers, rollators, shower chairs, commodes, and toilet seat risers. In addition, we have a large amount of Depends and overnight pads. These supplies and equipment are available free for anyone within the St. Raphael and St Gabriel parish boundaries. Simply call the rectory and leave a message and we will deliver any items to you. Judy, RN 314.353.6303 or email at hunterj@stgabrielstl.org.



Sunday, March 2
9:00am Joseph and Mary Abissinia

Monday, March 3
8:00am Hodes Family, SI

Tuesday, March 4
8:00am Liddy Family

Wednesday, March 5
8:00am Kris Schneidewind
5:30pm Hodes Family, SI

Thursday, March 6
8:00am Eva Ruggeri

Friday, March 7
8:00am Christopher G. Klos

Saturday, March 8
7:00am Riegel Family
4:30pm Maureen Fox, SI

Sunday, March 9
9:00am Edythe Crawford


"A good tree does not bear rotten fruit, nor does a rotten tree bear good fruit." Luke 6:43

Are you using your gifts in the way God intended? Have you asked God how He would like you to use them? Do you compare yourself to others and complain about what you don't have instead of being thankful for what you do have? God gives each of us unique gifts and a unique plan. Listen to how God is calling you to use those gifts, to bear good fruit, for the glory of His name.

Your Contributions to God and Parish

Feb. 23, 2025 (Envelopes Used)	This Week	Year-to-Date
Regular Env. (26)	\$ 3,750	\$ 141,027
Loose Money	\$ 1,371	\$ 74,166
School Support	\$ 400	\$ 6,783
Building Fund	\$ 40	\$ 5,980
Holy Days	\$ 0	\$ 9,126
Online Giving (49)	\$ 2,683	\$ 101,290
Tithing	(\$ 30)	
Grand Total	\$ 8,274	
Total for Parish	\$ 8,244	\$ 344,658
Amount Needed	\$ 10,000	\$ 350,000
Difference	<u>(\$ 1,756)</u>	<u>(\$ 5,342)</u>
FYE 2024		<u>(\$ 17,741)</u>

St. Vincent de Paul



We strive to serve the poor, the hungry, the homeless, the sick, and the elderly. The Bible emphasizes the importance of helping those in need, and Jesus identifies Himself with the needy. Thank you so much for your prayers, generosity, and compassion as we are called to care for our neighbors in need right here within our parish boundaries.

This weekend's Sacred Scripture readings:

Sunday, March 2:
Ritual Song: No. 1217
Pray Together: Page 97



ALTAR SERVERS

SERVERS FOR MARCH 3 - 9, 2025

Monday, March 3

8:00am	Elle Anstey	Jake Anstey
	Delilah Gore	

Tuesday, March 4

8:00am	Harrison Baker	Grace Berta
	Ava Christlieb	

Wednesday, March 5

8:00am	Paddy Meier	Emma Rooney
	Sean Meier	
5:30pm	Not Filled	

Thursday, March 6

8:00am	Caleb Bernadt	Lucas Kuenzel
	Christian Bernadt	

Friday, March 7

8:00am	Henry Dirnbeck	Elliot Ottenad
	Mollie Dirnbeck	

Saturday, March 8

4:30pm	Harper Bradshaw	Lucy Howard
	Sophia Bradshaw	

Sunday, March 9

9:00am	Helen Potts	Jude Potts
	Samantha Zouglass	

LECTORS/MINISTERS FOR THE WEEKEND OF MARCH 8 - 9, 2025

LECTORS

4:30pm	9:00am
Christy Connor	Denise Howard

Extraordinary Ministers

Pam Hager	Dennis Matreci
Greg Heuing	Bart Saracino
Tony Mariani	Linda Saracino
Mary Steck	Amy Schisler

Monday, March 3

8:00am	Church	Mass
3:30pm	Gym	Basketball Practices
5:00pm	Gym	4th Gr. Basketball Tournament
6:00pm	Cafeteria	3rd Gr. Girl Scouts
7:00pm	Parish Off.	Stewardship Meeting

Tuesday, March 4

8:00am	Church	Mass
9:00am	Parish Off.	7th & 8th Gr. Confirmation Rtrt.
3:15PM	Cafeteria	1st Gr. Girl Scouts
3:30pm	Gym	Basketball Practices
5:00pm	Gym	4th Gr. Basketball Tournament

Wednesday, March 5

7:30am	Church	Rosary
8:00am	Church	Mass
5:00pm	Gym	4th Gr. Basketball Tournament
5:30pm	Church	Mass
8:30pm	Gym	Old Man Basketball

Thursday, March 6

8:00am	Church	Mass
2:00pm	Cafeteria	Dance Class
5:00pm	Gym	4th Gr. Basketball Tournament
5:30pm	Cafeteria	4th Gr. Girl Scouts
7:00pm	AYM Room	Archangel Youth Ministry R&R

Friday, March 7

7:30am	Church	Rosary
8:00am	Church	Mass
9:00am	Church	1st Friday Adoration
3:30pm	Gym	Basketball Practices
5:00pm	Gym	4th Gr. Basketball Tournament

Saturday, March 8

7:00am	Church	Mass
8:00am	Church	Music Ministry Rehearsal
8:00am	Gym	4th Gr. Basketball Tournament
4:30pm	Church	Mass

Sunday, March 9

8:00am	Gym	4th Gr. Basketball Tournament
9:00am	Church	Mass - Girl Scout Sunday - Donut Sunday
6:45pm	AYM Room	AYM Luke18 Meeting #1

DAILY READINGS

Sunday	Sir 27:4-7/Ps 92:2-3, 13-14, 15-16 (see 2a)/1 Cor 15:54-58/Lk 6:39-45
Monday	Sir 17:20-24/Ps 32:1-2, 5, 6, 7/Mk 10:17-27
Tuesday	Sir 35:1-12/Ps 50:5-6, 7-8, 14 and 23/Mk 10:28-31
Wednesday	Jl 2:12-18/Ps 51:3-4, 5-6ab, 12-13, 14 and 17/2 Cor 5:20—6:2/Mt 6:1-6, 16-18
Thursday	Dt 30:15-20/Ps 1:1-2, 3, 4 and 6/Lk 9:22-25
Friday	Is 58:1-9a/Ps 51:3-4, 5-6ab, 18-19/Mt 9:14-15
Saturday	Is 58:9b-14/Ps 86:1-2, 3-4, 5-6/Lk 5:27-32
Next Sunday	Dt 26:4-10/Ps 91:1-2, 10-11, 12-13, 14-15 (see 5b)/Rom 10:8-13/Lk 4:1-13



Girl Scout Sunday

SRA will celebrate Girl Scout Sunday on Sunday, March 9, at the 9:00am Mass.



Please Join Us on March 29, 2025 for The Annual SRA

Progressive Dinner Party



A night of Food, Fun, & Fellowship for \$30 per person

(fees waived for host houses)

How Does a Progressive Dinner Work?

You will be contacted in the week before with a house to go to for Appetizers

After Appetizers your host will inform you where to go for Dinner

Dessert and Fun to follow at The Braun's

Questions?

Contact Ellen Pendry at ellenpendry@gmail.com or (314) 229-9243

Reservations Required

Detach and return the below form by March 24, 2025

I Can't Wait for the Progressive Dinner Party

RSVP and Payment can be dropped off at the Rectory or School Office in care of Ellen Pendry

Make checks payable to SRA Ladies' Club

I would like to:

Host an Appetizer _____ Host a Dinner _____ Drop off a Dessert _____

Number of Attendees _____

Name of Attendees _____

Address _____

Contact Info _____

Host volunteers will be contacted with more information

The Ladies' Club March meeting is later than usual due to Spring Break. It will be held on March 27, at 7:00pm, in the cafeteria. You have an option to paint a Spring or Easter door sign. If you would like to participate, the cost is \$30 and the deadline to reserve is **MARCH 13**. Please see sample pictures. Choice of sign and payment will be required in advance and can be paid through PayPal, add \$1 and using QR code below, or by \$30 cash/check dropped at the parish office. Checks should be made out to SRA Ladies' Club, memo "Spring Painting." Please contact Krissy Sullivan at 314.608.9983 for questions or to sign up by phone.

<https://www.signupgenius.com/go/10C094FABAA2AA6FCC52-55175014-march>



FOR LENT FOR LIFE

On Ash Wednesday, March 5, and the following weekends, Catholic Relief Services Rice Bowls will be in the entrances to church. Please pick up a Rice Bowl to be used by your family throughout Lent.

Visit csrricebowl.org/join to share your Lenten prayer intentions.



Lenten Project...Our Lady's Inn and Prison Ministries

This year, our SRA Lenten project will benefit two charities: Our Lady's Inn Maternity Home in Defiance, MO, and prison ministries in both the Pacific Correctional Center and the Residents Encounter Christ retreat program.

- Our Lady's Inn Maternity Home helps those moms who may have been homeless or experienced housing insecurity and are making life-affirming decisions for their child. This maternity home is just one example where the Church continues its support for mothers in need and bears witness to the dignity of all human life. Our Lenten project will help these women and their children by providing laundry baskets and goodie bags with much needed necessities:

Shower gel or body wash

Hairbrushes/combs

Baby shampoos/lotions/washes

Adult coloring books or journals and colored pencils

Individual snacks for lunches

Laundry detergent

Household supplies and paper products

Boxes of cake and brownie mix

Kitchen & hand towels

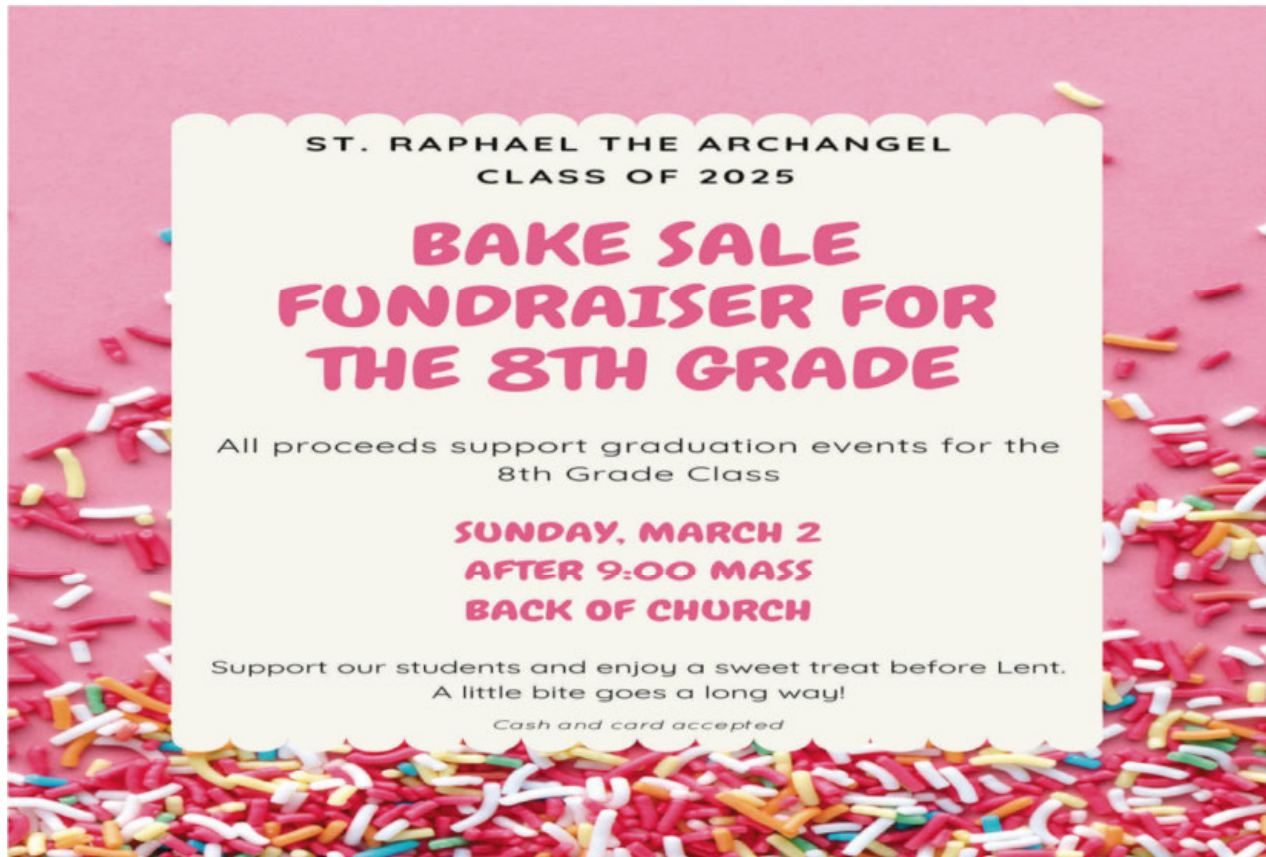
Individual snacks for lunches

Gift cards to Walmart or Fast Food

Beginning Saturday, March 8, there will be baby gift bags in Church, one under the Blessed Mother statue and one under the St. Joseph statue; please deposit any of these donations in the bags prior to Sunday, April 6, 9:00am Mass.

- Through our support given to the Pacific Correctional Center and the Residents Encounter Christ retreat program, the incarcerated will personally encounter Jesus Christ through our Corporal Works of Mercy. Participants experience the message of Christ through participation in a simple and modest meal, discussions, talks, prayer, scripture, and liturgy. This portion of the Lenten project will be financial in nature only. Beginning the weekend of March 8, envelopes will be included in the pews for your financial support; if you prefer online giving, look for "Lenten Project" as a donation option.

As you so graciously and generously do every year, please support this year's Lenten project. If you have any questions, please contact the parish office at 314.352.8100. Thank you.



Jonah Prayer Team Ministry

We are happy to announce a new ministry at St. Raphael the Archangel Parish. The Jonah Prayer Team consists of a group of fellow SRA parishioners trained through the archdiocese to provide personal, intercessory prayer for various situations. All are welcome to go to them for special intentions, troubles, and prayers. They will regularly be available the 2nd weekend of each month, starting in March.



Youth Club Raffle Winners February 2025

1st Place \$100	Karen Alberti
2nd Place \$50	Sue Brandt
3rd Place \$50	Dennis O'Connor

APRIL 25 - 27, 2025



Believe

8TH GRADE RETREAT
LED BY AYM HIGH SCHOOL TEENS

LUKE 18

8th GRADER Registration will be open
February 10th - March 3rd.

The registration link can be found on the youth group page of the SGA website
<https://www.stgabrielstl.org/Worship-and-Formation/Youth-Group>

or contact youth minister, Sarah Henderson
hendersons@stgabrielstl.org

BIG CHANGES TO ARCHANGEL YOUTH MINISTRY (AYM)!

Beginning today, Sunday, March 2, 2025, AYM will have a new home at St. Raphael the Archangel! We are so excited for this opportunity to continue meeting in a new space (as our former space at St. Gabriel will be renovated) and become more involved with St. Raphael parish! Our new space is in St. Raphael's parish office lower level and we will continue to meet on Sunday and Wednesday evenings.

That being said, our Life Teen (Sunday) and R&R (Wednesday) nights will be on hold for the months of March and April as we prepare for and host the Luke 18 Retreat for 8th graders.

We will have one final R&R night this week, but it will be Thursday night (3/6) from 7-8:30pm since Wednesday is Ash Wednesday.

DON'T MISS OUT! - REGISTRATIONS CLOSE NEXT WEEK!

Registration will close on Monday, March 3, for 8th graders to attend the Luke 18 Retreat and for 8th-12th graders to help lead Silhouette Stations of the Cross. The links can be found on the youth group page of the SGA website or by emailing youth minister, Sarah Henderson.

STAY CONNECTED WITH AYM

Follow us on Instagram @archangelym

Like our Facebook Group: Archangel Youth Ministry

Join the SGA or SRA Flocknote Group: Youth Ministry

Visit the Youth Group page on the SGA parish website

Contact Youth Minister: Sarah Henderson - hendersons@stgabrielstl.org

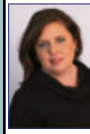


Sunday	Monday	Tuesday	Wednesday	Thursday	Friday	Saturday
Please Note: Beginning March 2nd, AYM will meet in St. Raphael's Rectory Basement. This will be AYM's home until further notice.						1
2 Moving Day! 	3 Luke 18 Retreat & Stations of the Cross Registrations DUE!	4	5 Ash Wednesday 	6 AYM R & R Night Recharge & Reconnect	7 	8
9 Luke 18 Mtg. Team Members (#1)	10 Stations Practice (#1)	11	12	13	14 	15
16 NO AYM Spring Break	17 Happy St. Patrick's Day! 	18	19	20 hello Spring 	21 	22
23 Teen Mass & Luke 18 Mtg. Team Members (#2)	24 Stations Practice (#2)	25 The Annunciation of the Lord 	26	27	28 	29
30 Luke 18 Mtg. Team Members (#3)	31 Stations Practice (#3)					



(314) 481-7333
Since 1927

Bartolino's
Hospitality Group
Bartolino's Bartolino's Bartolino's
Chris Chris
Cook good food & give plenty.
bartolinosrestaurants.com



Jennifer Lueken Delf
Sales Associate
314-323-6073 Cell
314-965-3030 Office
314-965-2858 Fax
jennifer.delf@cbgundaker.com
421 South Kirkwood Road
Kirkwood, MO 63122
jenniferdelf.cbintouch.com
Operated by a subsidiary of NRT LLC.



IMO'S PIZZA
832-9677
5806 Hampton Avenue
CARRY OUTS & DELIVERY

WE'RE HIRING!
AD SALES EXECUTIVES

BE YOURSELF.
BRING YOUR PASSION.
WORK WITH PURPOSE.

- Paid training
- Some travel
- Work-life balance
- Full-Time with benefits
- Serve your community



Contact us at
careers@4lpi.com or
www.4lpi.com/careers



Karen Majda
REALTOR® GRI
(314) 574-2560
(314) 353-8888

Wood Brothers Realty
6500 Chippewa St. Fl 1
Saint Louis, MO 63109



Climate Control & Drive Up Units Available
No Fees. Gated Facility 24/7 Access
Seniors & Military 10% off
Second Month Free. Closed Circuit Security
metrostoragemo.com
2729 HEREFORD ST. • 314-312-2020
LOCATED ON THE HILL OFF ARSENAL

Paul Karasek Since 1954

BRUNETTI / PESC-CO., INC.
Professional Exterminating Service & Chemical CO.

200 S. Elam
Valley Park, MO 63088

314-487-2208 1-888-220-BUGS

- FIELDER - ELECTRICAL SERVICES, INC.
LICENSED • BONDED • INSURED RESIDENTIAL • COMMERCIAL • INDUSTRIAL
Service Upgrades • New Homes • Remodeling • Room Additions • Basements • Kitchens
Bathrooms • Code Violations • Knob & Tube Upgrades • Back Up Generator Systems
\$20 OFF Any Electrical Work of \$100 or more **314-966-3388**

SUPPORT OUR ADVERTISERS!

SUPPORT OUR ADVERTISERS!



Enjoying life is what it's all about at
Tower Grove Manor

We have garage parking, plus lovely apartments with walk-in closets, full kitchens, and great views of Tower Grove Park and the skyline. More amenities, activities and only minutes from theatres, the Botanical Garden, and the best healthcare.

2710 S. Grand Blvd.
St. Louis, MO 63318
Tel. 314-773-2800
www.towergrovemanager.org



TREE & LAWN CARE EXPERTS SINCE 1880
\$20 OFF
Tree Pruning/Removal/Fertilization
(314) 961-5440 | www.davey.com

DOES YOUR NONPROFIT ORGANIZATION NEED A NEWSLETTER?

Engaging, ad-supported print and digital newsletters to reach your community.

Visit lpicommunities.com

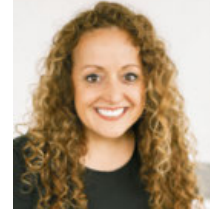


ROSATI-KAIN ACADEMY
Catholic. All-Girls. College-Prep.
APPLY NOW

Educating women to lead and serve the world!

www.rosati-kain.org / 4389 Lindell Blvd, St. Louis, MO 63108

ANNA GARCIA
garcia PROPERTIES
cell 314.973.3319 • www.garciasll.com
anna@garciaproperties.com



OPEN EVERY DAY FOR DINE IN & PICK UP



314.436.3742
Sun - Thurs: 11am - 10:30pm
Fri - Sat: 11am - 1:30am
1711 South 9th Street



Commercial & Residential
(314) 487-4564

GRAVOIS GLASS
Residential & Commercial
GLASS REPLACEMENT

Most Insulated Units in 24 Hours
Mirrors • Table Tops
Insulated Glass • Window Parts • Safety Glass
314-352-2200 | gravoisglass@aol.com
6825 Gravois Ave. St. Louis 63116



For ad info. call 1-800-950-9952 • www.4lpi.com

St Raphael the Archangel - Saint Louis, MO

B 4C 01-1608

Scott R. Holdridge, Agent
Call or Email me Today!
Bus: 314-664-5433
 scott@scottholdridge.com
 scottholdridge.net

I can help you with your Insurance, Banking and Financial Services Needs



HOFFMEISTER COLONIAL MORTUARY
Helping people is our business.

Conveniently located at
 6464 Chippewa in St. Louis Hills



www.hoffmeistercolonial.com • 314.832.7770



Judy McNamara
 3304 Watson Road
 St Louis, MO 63139
 314-781-2290

www.judymcnamara.com

Place Your Ad Here and Support our Parish!

Instantly create and purchase an ad with

AD CREATOR STUDIO



4lpi.com/adcreator



New Construction, Additions, & Garages

STL BUILD CO. 314-329-4955

build@stlbuildco.com • www.stlbuildco.com



Specializing In Older Home Repairs

314-752-1101

St. Louis, MO



Good Neighbors, Good Advice

Steve, Brian, Sean, Gary, & Allison
 6401 Hampton Avenue, St. Louis, MO 63109
southsidetruevaluehardware@gmail.com

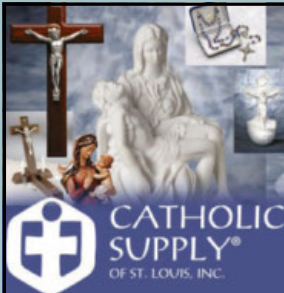
SouthsideHardware.com 314-351-0204



Dr. Catherine Saracino
 DMD, MSD, MS

ORTHODONTIST

Braces • Invisalign • Whitening
 314.649.8999 | Saracinoorthodontics.com
 6555 Chippewa St., Suite 200
 St. Louis, MO 63109



CATHOLIC SUPPLY
 OF ST. LOUIS, INC.
 ST. LOUIS HILLS | (314) 644-0643
 6759 Chippewa | St. Louis, MO 63109
 Mon-Sat 9:00am to 5:30pm
 ST. CHARLES COUNTY | (636) 379-3705
 2985 Hwy K | O'Fallon, MO 63368
 Mon-Sat 10:00am to 5:30pm
catholicsupply.com



FREE AD DESIGN

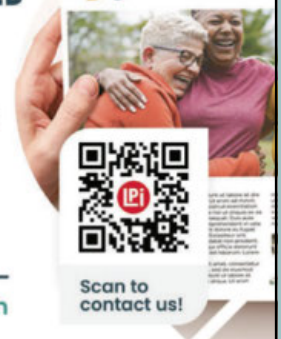
with purchase of this space

CALL 800-950-9952

DOES YOUR NONPROFIT ORGANIZATION NEED A NEWSLETTER?



Engaging, ad-supported print and digital newsletters to reach your community.



Scan to contact us!

VisitIpicommunities.com

JAMES LEGRAND



4414 Donovan
 314-353-6128

legrandsmarket-catering.com

LeGrands Market & Catering



**Fertilization
 Weed Control
 Aeration
 Seeding**

loyaltylawncare.com (636) 306-3671

IF YOU LIVE ALONE

MDMedAlert!™ As Low As **\$19⁹⁵** /mo.

- ✓ Ambulance ✓ Police/Fire
- ✓ Family/Friends ✓ GPS & Fall Alert

CALL NOW! 800.808.9294
 md-medalert.com



Celebrate life with faith and friends at The Sarah Community!

12284 DePaul Drive
 Bridgeton, MO 63044
 314-209-7000

TheSarahCommunity.com | [TheSarahCommunity](https://www.facebook.com/TheSarahCommunity)

LET'S GROW YOUR BUSINESS

Place Your Ad Here and Support Our Parish!

**CONTACT ME
 Iris Mitchell**

imitchell@4LPi.com

(800) 950-9952 x2495

Kutis FUNERAL HOME

2906 GRAVOIS
 772-3000

10151 GRAVOIS
 842-4458

5255 LEMAY FERRY
 894-4500

Proud Parishioners & Supporters of SRA for 20+ years



John & Alec Schicker
 314-664-4100
SchickerAutomotive.com



KITTNER REAL ESTATE GROUP

angelakittner.com | 314-775-2745



For ad info. call 1-800-950-9952 • www.4lpi.com

St Raphael the Archangel - Saint Louis, MO

A 4C 01-1608