



SAINT RAPHAEL THE ARCHANGEL

CATHOLIC CHURCH

MARCH 17, 2024 FIFTH SUNDAY OF LENT



WELCOME!

VISIT OR CONTACT US

6047 Bishops Place
Saint Louis, MO 63109

314.352.8100
straphaelarchangel.org

Mon.-Thu. | 7:30am-4:00pm
Fri. | 7:30am-12:00pm

@SRAtoday

@SRAtoday

straphaelarchangel

SCHOOL INFORMATION

6000 Jamieson Avenue
Saint Louis, MO 63109

314.352.9474 | 314.351.7477 (Fax)
Mon.-Fri. | 7:00am-3:00pm

MASS SCHEDULE

WEEKEND MASS

Saturday | 7:00am, 4:30pm
Sunday | 9:00am

WEEKDAY MASS

Mon. - Fri. | 8:00am

CONFESSION

Monday - Friday | 7:30am
Saturday | 3:30pm
Other | By Appointment

CHURCH OPEN FOR PRIVATE PRAYER

Mon.-Fri. | 8:00am-2:00pm
Saturday | 8:00am-4:30pm



PARISH CLERGY

Fr. Thomas Molini, Pastor
thomasmolini@archstl.org

LAY LEADERSHIP

Brian McCarthy, Parish Council
brianmccarthy@peaknet.net

Ellen Pendry, School Board
schoolboard@straphaelarchangel.org

Joseph Cyr, Finance Council
314.335.7322

Sara Wright, HSA President
sara.y.wright@gmail.com

PARISH STAFF

Ray and Mary Anne Braun, Music Ministers
Braun@straphaelarchangel.org

Diane Halbert, Parish Office Manager
halbert@straphaelarchangel.org

Mickey Janos, Admn. Assistant
janos@straphaelarchangel.org

Pam Hager, Parish Support Staff/
Child Safety Coordinator
hager@straphaelarchangel.org

Robert Schlueter, Maintenance

Julie Hayes, School Principal
hayes@straphaelarchangel.org

Kathy Shaver, School Secretary
secretary@straphaelarchangel.org

Qi Franz, Cafeteria Manager
franz@straphaelarchangel.org

Sarah Henderson, Youth Minister
hendersons@stgabrielstl.org

This weekend's Sacred Scripture readings:

Sunday, March 17:

Ritual Song: No. 1129

Pray Together: Page 115

MARCH 17, 2024 FIFTH SUNDAY OF LENT

Fr. Molini's Notes

Lent – a time to reconcile

This holy season has always had a penitential element associated with it and all are encouraged to make a good confession. While we offer confession each weekday at 7:30am and on Saturday before the evening Mass, these times are not conducive for many.

Additional times for confessions are:

St. Raphael on Monday, March 25, beginning at 7:00pm until all are heard

St. Gabriel on Tuesday, March 26, beginning at 7:00pm until all are heard

I hope you will take advantage of these additional opportunities for the Sacrament of Reconciliation.

Holy Week and Easter

Holy Thursday, Mass of the Lord's Supper

St. Gabriel – 7:00pm with Night Prayer at 11:00pm

St. Raphael – 7:00pm with the church open until 10:00pm

Good Friday, Celebration of the Lord's Passion

St. Gabriel – 3:00pm

St. Raphael – 7:00pm

The churches will be open during the day so families may make the Stations of the Cross together – books will be available for use.

Holy Saturday, Easter Vigil

St. Gabriel – 8:00pm

Easter Sunday Masses

St. Gabriel – 6:30am, 10:00am, 5:30pm

St. Raphael – 7:00am, 9:00am

Tuesday Eucharistic Adoration

Thanks to the many volunteers showing up to support Eucharistic Adoration on Tuesdays, held for both parishes at St. Gabriel. Can we sustain this permanently? I hope so. As we move forward, I hope we can begin to have people consistently commit to a Holy Hour on Tuesdays. Please give an hour a week to the Lord before the Blessed Sacrament on Tuesdays between 9:00am and 9:00pm.

LIFELINE COALITION CAMPAIGN

It's that time of the year again, time for the LifeLine Coalition Campaign. This effort will extend from March 4 to March 18. We rejoice in the defeat of Roe v. Wade and the Missouri Legislature's ban on abortion. However, there still are women and families who need assistance to face a crisis pregnancy. Guided by the efforts of the Respect Life Apostolate, your donation to LifeLine Coalition aids those women in need. Find your envelope in the SRA March packet of envelopes. Thank you for building the Culture of Life! The SRA ProLife Committee





Mass Intentions

Sunday, March 17

9:00am Fred and Frosty Hodes, SI

Monday, March 18

8:00am Liddy Family

Tuesday, March 19

8:00am Jost Family

Wednesday, March 20

8:00am Neil Svetanics

Thursday, March 21

8:00am Thomas McKenna

Friday, March 22

8:00am Carolyn Otz

Saturday, March 23

7:00am Kris Schneidewind

4:30pm Ernie J. Winkelmann

Sunday, March 24

9:00am Jerry Bentz

*"I will be their God and they shall be my people."
Jeremiah 31:33*

What does it mean to be God's people? It means we recognize that everything we have and everything we are belongs to God. We aren't "owners" of anything; we are merely "stewards" of the gifts God has given us. It means we are willing to use our gifts and our lives to care for our families, our neighbors, and for people we don't know, just as God cares for us.

Your Contributions to God and Parish

March 10, 2024 (Envelopes Used)	This Week	Year-to-Date
Regular Env. (43)	\$ 3,792	\$ 163,597
Loose Money	\$ 1,463	\$ 47,908
School Support	\$ 35	\$ 5,010
Building Fund	\$ 10	\$ 6,142
Holy Days	\$ 0	\$ 7,026
Online Giving (52)	\$ 3,413	\$ 120,389
Tithing	(\$ 1)	
Retired Religious	(\$ 911)	
Catholic Relief	(\$ 250)	
Black/Indian Miss.	(\$ 55)	
Holy Land	(\$ 10)	
ProLife	(\$ 200)	
Easter Flowers	\$ 254	
Grand Total	\$ 10,444	
Total for Parish	\$ 8,967	\$ 354,396
Amount Needed	\$ 10,000	\$ 370,000
Difference	<u>(\$ 1,033)</u>	<u>(\$ 14,571)</u>
FYE 2023		<u>\$ 5,826</u>

From St. Vincent de Paul Society

Our SVdP Conference would not be able to assist our neighbors who are having a rough time without your loving support. Through your generous donations in 2023, we were able to collect \$62,000. Added to our funds already on hand, we were able to help our neighbors in need with over \$66,000. We had enough money to help 150 families who called upon us when they were suffering. Your donations were spent in the following ways: Housing \$41,391, Utilities \$16,818, Food \$3,912, Furniture/Clothing \$985, and Transportation \$2,725. We also visited with families in their homes and distributed multiple bags of household supplies and personal items. When we make the home visits, we pray with the families, assuring them that they are not alone. We pray that we are able to give them some peace of mind. All this is made possible through your prayers and financial support. We sincerely thank you.



ALTAR SERVERS

SERVERS FOR MARCH 23 AND 24, 2024

Saturday, March 23

4:30pm Mark Boeckmann Clara Thompson
Sophia Bradshaw

Sunday, March 24

9:00am Linus Cyr Xavier Cyr
Anna Wright

LECTORS/MINISTERS FOR THE WEEKEND OF MARCH 23 AND 24, 2024

LECTORS

4:30pm
Linda Hiette

9:00am
Gerry Unger
Denise Howard

Extraordinary Ministers

Greg Heuing
Margie Auer
Kevin Liddy

John Rooney
Marilyn Unger
Gerald Unger

UPCOMING EVENTS

Monday, March 18

8:00am Church Mass
7:00pm School School Board

Tuesday, March 19

8:00am Church Mass
3:15pm Cafeteria Girl Scouts
4:00pm Gym Basketball Practice
4:30pm Cafeteria 1st Gr. Girl Scouts
6:30pm School HSA
7:00pm Cafeteria Men's Club

Wednesday, March 20

7:30am Church Rosary
8:00am Church Mass
4:00pm Cafeteria Deanery Meeting
8:30pm Gym Men's Basketball

Thursday, March 21

8:00am Church Mass
2:00pm Cafeteria Dance Class
5:00pm Gym PreK-2nd Gr. Basketball Clinic
6:00pm Church Choir Practice

Friday, March 22

7:30am Church Rosary
8:00am Church Mass
12:00pm Church Stations of the Cross
3:30pm Gym Basketball Practice
4:00pm Cafeteria Fish Fry

Saturday, March 23

7:00am Church Mass
4:30pm Church Mass
5:30pm Gym Cornhole Tournament

Sunday, March 24 - Palm Sunday - Donut Sunday

9:00am Church Mass - Family Mass
9:30am Cafeteria Easter Basket Assembly
5:30pm GH AYM Youth Mass & Social

DAILY READINGS

Sunday	Jer 31:31-34/Ps 51:3-4, 12-13, 14-15 (12a)/Heb 5:7-9/Jn 12:20-33 <i>Scrutiny:</i> Ez 37:12-14/Ps 130: 1-2, 3-4, 5-6, 7-8 (7)/Rom 8:8-11/Jn 11:1-45 or 11:3-7, 17, 20-27, 33b-45
Monday	Dn 13:1-9, 15-17, 19-30, 33-62 or 13:41c-62/Ps 23:1-3a, 3b-4, 5, 6/Jn 8: -11
Tuesday	2 Sm 7:4-5a, 12-14a, 16/Ps 89:2-3, 4-5, 27 and 29/Rom 4:13, 16-18, 22/Mt 1:16, 18-21, 24a or Lk 2:41-51a
Wednesday	Dn 3:14-20, 91-92, 95/Dn 3:52, 53, 54, 55, 56/Jn 8:31-
Thursday	Gn 17:3-9/Ps 105:4-5, 6-7, 8-9/Jn 8:51-
Friday	Jer 20:10-13/Ps 18:2-3a, 3bc-4, 5-6, 7/Jn 10:31-
Saturday	Ez 37:21-28/Jer 31:10, 11-12abcd, 13/Jn 11:45-56
Next Sunday	Mk 11:1-10 or Jn 12:12-16/Is 50:4-7/Ps 22:8-9, 17-18, 19-20, 23-24 (2a)/Phil 2:6-11/Mk 14:1—15:47 or 15:1-39



ST. RAPHAEL
MEN'S CLUB

CORNHOLE

TOURNAMENT

SATURDAY, MARCH 23 | SRA GYM
DOORS OPEN 5:30PM | BAGS FLY 6:00PM

\$60 PER TEAM • INCLUDES BEER

50/50 RAFFLE • AGES 21+

NCAA BASKETBALL TOURNAMENT VIEWING

EMAIL TO REGISTER & QUESTIONS TO:

Brian Sullivan • sullyb30@yahoo.com
Tony Howard • tony@stlbuildpro.com

MAKE PAYMENT TO:

PayPal @sramensclub

6000 JAMIESON AVE



Donations

SRA is hosting an Easter Egg Hunt again this year. The committee is asking for the following donations:

Small prizes: chalk, bubbles, stickers, pencils
Large prizes: Play-Doh, kites, coloring books, crayons
Individually-wrapped candy

Items can be dropped off at the parish office.

Thank you.

Easter Egg Hunt

The Easter Egg Hunt will be on Easter Sunday, March 31, after the 9:00am Mass. The children will meet outside of church and be escorted to the grass area in front of school.

The Easter Bunny will be there, too!!! Hope to see you!

SRA Lenten Project 2024

St. Raphael is coming together again to serve others as a part of our Lenten season. We are assisting two different organizations this year. For St. Augustine Wellston Center we have already collected various items for Easter baskets for families. Monetary donations for Missionaries of Charity are still being accepted.

Missionaries of Charity - the order, founded by Mother Teresa, operates a shelter and soup kitchen in the Jeff-Vander-Lou neighborhood. We will collect monetary donations (please make note of the donation on the collection envelopes found in the pews or by online giving). Prayer shawls already made will also be donated.

Decline To Sign!

Pro-abortion supporters are attempting to put forth a ballot measure that would add an amendment to the Missouri Constitution that would legalize abortion throughout all stages of pregnancy. The ballot measure advocates for a right to dangerous late-term abortions paid for with taxpayer money and without parental consent for minors and without regard for the health of Missouri women. Starting this month through May 5, signature gatherers are in the process of collecting approximately 172,000 valid signatures in six out of eight congressional districts. **DECLINE TO SIGN** any such petition because no pro-life groups in Missouri are collecting signatures to support this effort.

Thank you for your attention to this important matter!

Knights of Columbus Blood Drive

Wednesday, April 24

2:00—7:00pm

SRA Cafeteria

For more information, scan the QR code or go to login.bloodcenter.org/donor/schedules/drive_schedule/124284.



Saint Raphael the Archangel



PALM SUNDAY *Family Mass*

Join us for
Family Mass
Palm Sunday
March 24
9:00 am

*They took palm branches and went out to meet Him, shouting, "Hosanna!"
"Blessed is he who comes in the name of the Lord!"
"Blessed is the king of Israel!"
John 12:13*



Congratulations to Max W., Jude P., Elle A., and Carly W., on winning the St. Louis Region Knights of Columbus Free Throw Championship. They will now compete at the Missouri State Championship in Columbia at Father Tolton High School. Good Luck!

Early Bulletin Publishing Deadlines

Please note: due to the upcoming holy days, the bulletins need to go to the publisher much earlier than usual for the next few weeks. Therefore, please send any bulletin items to the parish office as soon as possible before your event. Thank you.

Statement of the Missouri Catholic Conference on the Abortion Initiative Petition

The Catholic Church supports and defends society's most vulnerable, especially women and children, through accompaniment, social services, and material assistance.

A misleading proposed amendment to the Missouri Constitution suggests that a "right to an abortion" is needed to protect women, while the amendment could actually put women at risk and endanger preborn children. This ballot initiative would legalize abortions in this state and remove long standing health and safety standards for women. In addition, this initiative does nothing to reduce or eliminate the underlying social causes for abortion and does not further a true culture of life in the state.

Groups are currently collecting citizen signatures to add the amendment to the November 2024 ballot. **We encourage all Catholics and people of good will to not sign any petition that would put this amendment on the ballot.**

The Catholic Church in Missouri will continue to provide spiritual and material support to expectant mothers and their families through our parishes and ministries, and to advocate on their behalf and on behalf of their preborn children. For those women suffering from the pain of an abortion, the Church will continue to offer true healing and hope through its Post Abortive Healing Ministries. We ask all to help us in these efforts to safeguard the right to life.

We look forward to the day when every child, born and unborn, has the love and support needed to thrive and reach his or her full potential. Let us pray for a greater recognition of the gift of each and every human life in our society.

CATHOLIC BISHOPS OF MISSOURI



+ *Mitchell T. Rozanski*

Most Reverend Mitchell T. Rozanski
General Chairman
Archbishop of St. Louis



+ *James V. Johnston, Jr.*

Most Reverend James V. Johnston, Jr.
Vice Chairman
Bishop of Kansas City-St. Joseph



+ *Shawn McKnight*

Most Reverend W. Shawn McKnight
Executive Chairman
Bishop of Jefferson City



+ *Edward M. Rice*

Most Reverend Edward M. Rice
Bishop of Springfield-Cape Girardeau

Approved February 22, 2024

Quarter Auction 2024 Donation Suggestions

Sports Memorabilia
Wine, Beer, Liquor
Kitchen Items/Small Appliances
Water Bottles/Thermal Cups
Home Goods/Decorations



What is it?

70+ prizes are on display
Hold your paddle up to bid
on item(s) of your choice.
If your number is called,
you win the item!



Extraordinary Baskets & Raffles



Purchase raffle tickets
for high valued items.
50/50 raffle

Paddle Options



"All In" paddle \$30
Bid as often as you'd like.
-or-
Entry/pay to play paddle \$10
Pay a quarter to bid each time.

Tables

Reserve a table of 8 for \$80
Includes 8 entry paddles
Can upgrade to "All In" paddle
for \$20 (the night of or in advance)

-or-

Walk in night of event
Bring your own food and drinks!

To reserve a table email:
ladies@straphaelarchangel.org

Payments

Use PayPal to
pay for table
@sraladiesclub





ST. RAPHAEL



FISH FRY

FRIDAY, MARCH 22 4-7PM

DINE IN OR CARRY OUT | CASH OR CARD

DINNERS \$14

Includes 2 sides, bread,
dessert, tea or lemonade

Fried Cod

Baked Cod

Fried Shrimp (6 pc)

KIDS \$7

Includes 1 side, dessert,
tea or lemonade

Cod

Cheese Pizza

Mac & Cheese

SIDES

Mac & Cheese

Green Beans

Fries

Cole Slaw

A LA CARTE

Cod filet \$5

Shrimp (3 pc) \$5

Pizza \$3

Sides \$2

Dessert \$1

Soda, Beer and Wine available for purchase.



(314) 481-7333

Since 1927

Bartolino's Family Restaurants



2103 Sulphur Ave.
St. Louis, MO 63139



5914 So. Lindbergh
St. Louis, MO 63123

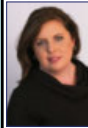


5980 Southwest Ave.
St. Louis, MO 63139



100 N. Tucker Blvd.
St. Louis, MO 63101

bartolinosrestaurants.com



Jennifer Lueken Delf
Sales Associate

314-323-6073 Cell
314-965-3030 Office
314-965-2858 Fax
jennifer.delf@cbgundaker.com



421 South Kirkwood Road
Kirkwood, MO 63122

jenniferdelf.cbintouch.com

Operated by a subsidiary of NRT LLC.



**IMO'S
PIZZA**

832-9677

5806 Hampton Avenue

CARRY OUTS & DELIVERY

WE'RE HIRING!

AD SALES EXECUTIVES

BE YOURSELF.
BRING YOUR PASSION.
WORK WITH PURPOSE.

- Paid training
- Some travel
- Work-life balance
- Full-Time with benefits
- Serve your community



Contact us at
careers@4lpi.com or
www.4lpi.com/careers



Kleekamp Insurance Group

For your Auto, Home and
Life Insurance needs.

Call
314-644-1500

Place Your Ad Here and Support our Parish!

Instantly create and
purchase an ad with

AD CREATOR STUDIO



4lpi.com/adcreator

SUPPORT OUR ADVERTISERS!



SUPPORT
OUR
PARISH



Enjoying life is what it's all about at

Tower Grove Manor

We have garage parking, plus lovely apartments with walk-in closets, full kitchens, and great views of Tower Grove Park and the skyline. More amenities, activities and only minutes from theatres, the Botanical Garden, and the best healthcare.

2710 S. Grand Blvd.
St. Louis, MO 63318
Tel. 314-773-2800
www.towergrovemanager.org



TREE & LAWN CARE EXPERTS SINCE 1880

\$20 OFF

Tree Pruning/Removal/Fertilization
(314) 961-5440 | www.davey.com



- FIELDER - ELECTRICAL SERVICES, INC.

LICENSED • BONDED • INSURED

RESIDENTIAL • COMMERCIAL • INDUSTRIAL

Service Upgrades • New Homes • Remodeling • Room Additions • Basements • Kitchens

Bathrooms • Code Violations • Knob & Tube Upgrades • Back Up Generator Systems

\$20 OFF

Any Electrical Work of \$100 or more

314-966-3388



Climate Control & Drive Up Units Available
No Fees. Gated Facility 24/7 Access
Seniors & Military 10% off
Second Month Free. Closed Circuit Security
metrostoragemo.com
2729 HEREFORD ST. • 314-312-2020
LOCATED ON THE HILL OFF ARSENAL

Paul Karasek

Since 1954

BRUNETTI / PESC-CO., INC.

Professional Exterminating Service & Chemical CO.

200 S. Elam

Valley Park, MO 63088

314-487-2208

1-888-220-BUGS

LET'S GROW YOUR BUSINESS

Place Your Ad Here
and Support Our Parish!

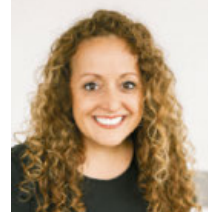
CONTACT ME
Iris Mitchell

imitchell@4LPi.com

(800) 950-9952 x2495



cell 314.973.3319 • www.garciastl.com
anna@garciaproperties.com



OPEN EVERY DAY FOR DINE IN & PICK UP



314.436.3742

Sun - Thurs: 11am - 10:30pm
Fri - Sat: 11am - 1:30am
1711 South 9th Street



Commercial & Residential

(314) **487-4564**



5300 Hampton Avenue
St. Louis, MO 63109

Phone: 314.379.5082

Fax: 314.379.5115

sthillsautoservice53@yahoo.com



Residential & Commercial

GLASS REPLACEMENT

Most Insulated Units in 24 Hours
Mirrors • Table Tops
Insulated Glass • Window Parts • Safety Glass
314-352-2200 | gravoisglass@aol.com
6825 Gravois Ave. St. Louis 63116



For ad info. call 1-800-950-9952 • www.4lpi.com

St Raphael the Archangel - Saint Louis, MO

B 4C 01-1608

Scott R. Holdridge, Agent

Call or Email me Today!

Bus: 314-664-5433

scott@scottholdridge.com
scottholdridge.net

*I can help you
with your
Insurance,
Banking and
Financial
Services Needs*



**Southside
True Value
Hardware**

6401 Hampton Ave.

351-0204

Good Neighbor, Good Advice.



**Dr. Catherine
Saracino**
DMD, MSD, MS

ORTHODONTIST

Braces • Invisalign • Whitening

314.649.8999 | Saracinoorthodontics.com

6555 Chippewa St., Suite 200

St. Louis, MO 63109

JAMES LEGRAND



4414 Donovan
314-353-6128

legrandsmarket-catering.com

LeGrands Market & Catering

**HOFFMEISTER
COLONIAL MORTUARY**

Helping people is our business.

Conveniently
located at
6464 Chippewa
in St. Louis Hills



www.hoffmeistercolonial.com • 314.832.7770

**Place Your Ad Here and
Support our Parish!**

Instantly create and
purchase an ad with

AD CREATOR STUDIO



4lpi.com/adcreator



Specializing In Older Home Repairs

314-752-1101

St. Louis, MO

**SHORT
STAFFED?**

Place an ad here to find
new local talent for
your business.



CALL

800-950-9952



**CATHOLIC
SUPPLY**
OF ST. LOUIS, INC.

**Religious Gifts, Books & Church
Supplies Since 1960**

ST. LOUIS HILLS
6759 Chippewa St
St. Louis, MO 63109
(314) 644-0643

O'FALLON MO
2985 Hwy K (at Hwy N)
O'Fallon, MO 63368
(636) 379-3705

catholicsupply.com



**FREE
AD
DESIGN**

with
purchase
of this
space

**CALL
800-950-9952**



FAMILY LAW

ELAINE A PUDLOWSKI, ESQ.

FRANKEL, RUBIN, KLEIN, PAYNE & PUDLOWSKI, P.C.

231 S. BEMISTON AVENUE, SUITE 1111
CLAYTON, MISSOURI 63105

O: (314) 725-8000 EXT. 114

F: (314) 726-5837

EPUDLOWSKI@FRANKELRUBIN.COM



Landscape Design/Build

Ron Goedeker

St. Raphael Parishioner

314-781-5750

www.landscapestlouis.com

Where Nature and Architecture Meet



**Fertilization
Weed Control
Aeration
Seeding**

loyaltylawncares.com (636) 306-3671

IF YOU LIVE ALONE

MDMedAlert!™ As Low As

\$19⁹⁵
/mo.

✓ Ambulance ✓ Police/Fire
✓ Family/Friends ✓ GPS & Fall Alert

CALL NOW! 800.808.9294

md-medalert.com



*Celebrate life with
faith and friends at
The Sarah Community!*

12284 DePaul Drive
Bridgeton, MO 63044
314-209-7000

TheSarahCommunity.com | [TheSarahCommunity](https://www.facebook.com/TheSarahCommunity)

LET'S GROW YOUR BUSINESS

Place Your Ad Here
and Support Our Parish!

**CONTACT ME
Iris Mitchell**

imitchell@4LPi.com

(800) 950-9952 x2495

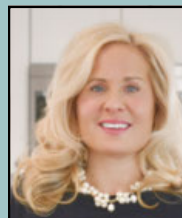
**Kutis
FUNERAL HOME**

2906 GRAVOIS
772-3000

10151 GRAVOIS
842-4458

5255 LEMAY FERRY
894-4500

**WE APPRECIATE OUR
ADVERTISERS!**



KITTNER
REAL ESTATE GROUP

angelakittner.com | 314-775-2745



For ad info. call 1-800-950-9952 • www.4lpi.com

St Raphael the Archangel - Saint Louis, MO

A 4C 01-1608